



Diffusion Tube Results 2008 & 2009

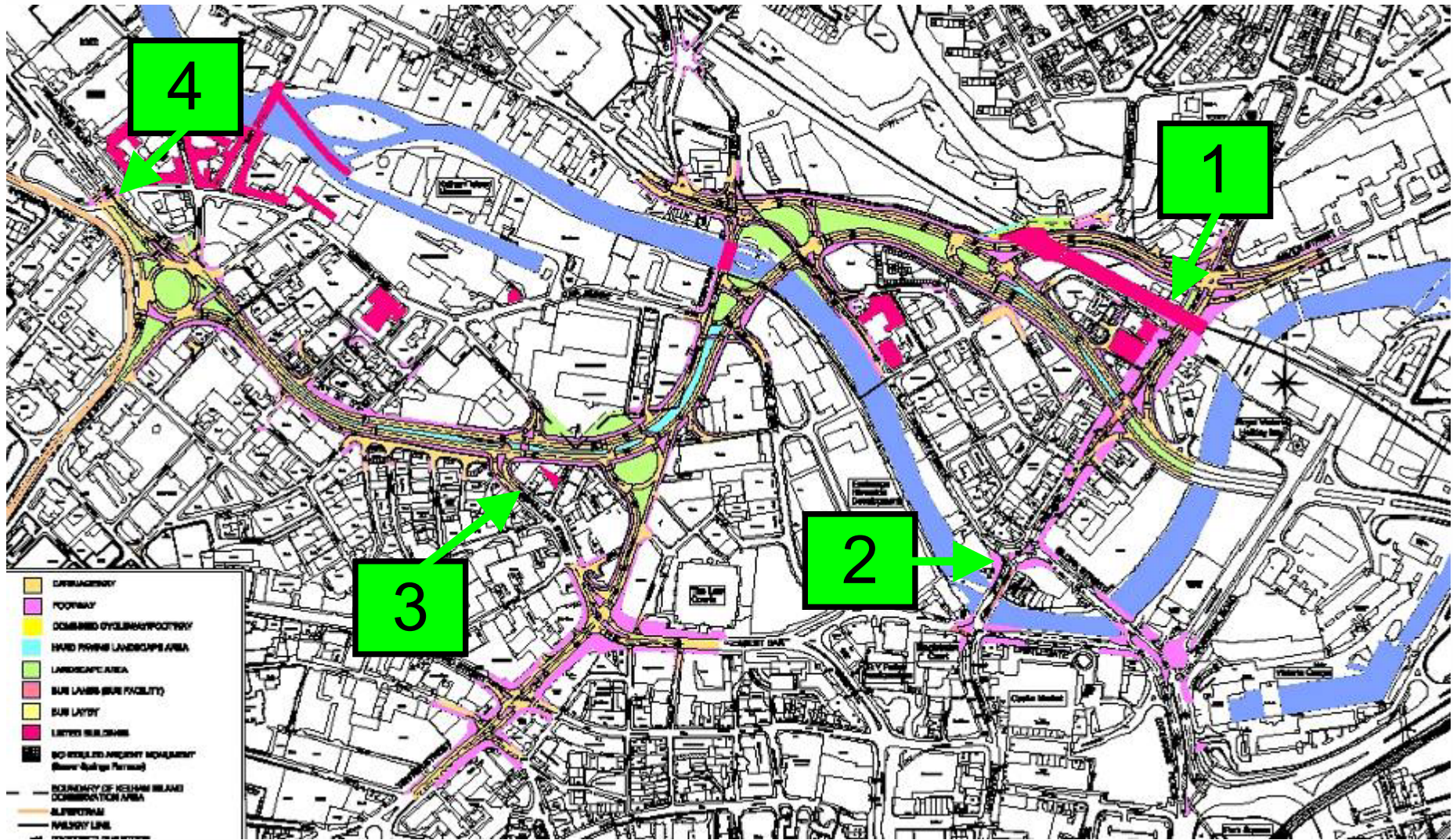
Adam Swift
Environmental Strategy
Support Officer



Results for Kelham Island Tubes

Kelham Island	Annual Mean NO2 µg/m3 2004	Annual Mean NO2 µg/m3 2005	Annual Mean NO2 µg/m3 2006	Annual Mean NO2 µg/m3 2007	Annual Mean NO2 µg/m3 2008	Annual Mean NO2 µg/m3 2009
1 - Wicker	-	-	43	41	42	38
2 - Ladys Bridge	-	-	82	77	44	42
3 - Gibraltar Street	-	-	37	41	34	34
4 - Penistone Road	-	-	46	55	49	51

Inner Relief Road



Brunswick Road





The Wicker





Penistone Road



Nursery Street



Sheffield Inner Relief Road Permanent Arrangements

TRAFFIC MANAGEMENT PLAN

KEY TO DESTINATIONS

- | | |
|---------------------------|------------------------------|
| 1 Kehran Island Museum | 6 The Markets |
| 2 SADACCA | 7 Royal Victoria Holiday Inn |
| 3 West Bar Police Station | 8 Victoria Quays |
| 4 The Law Courts | 9 Brook Shaw Park |

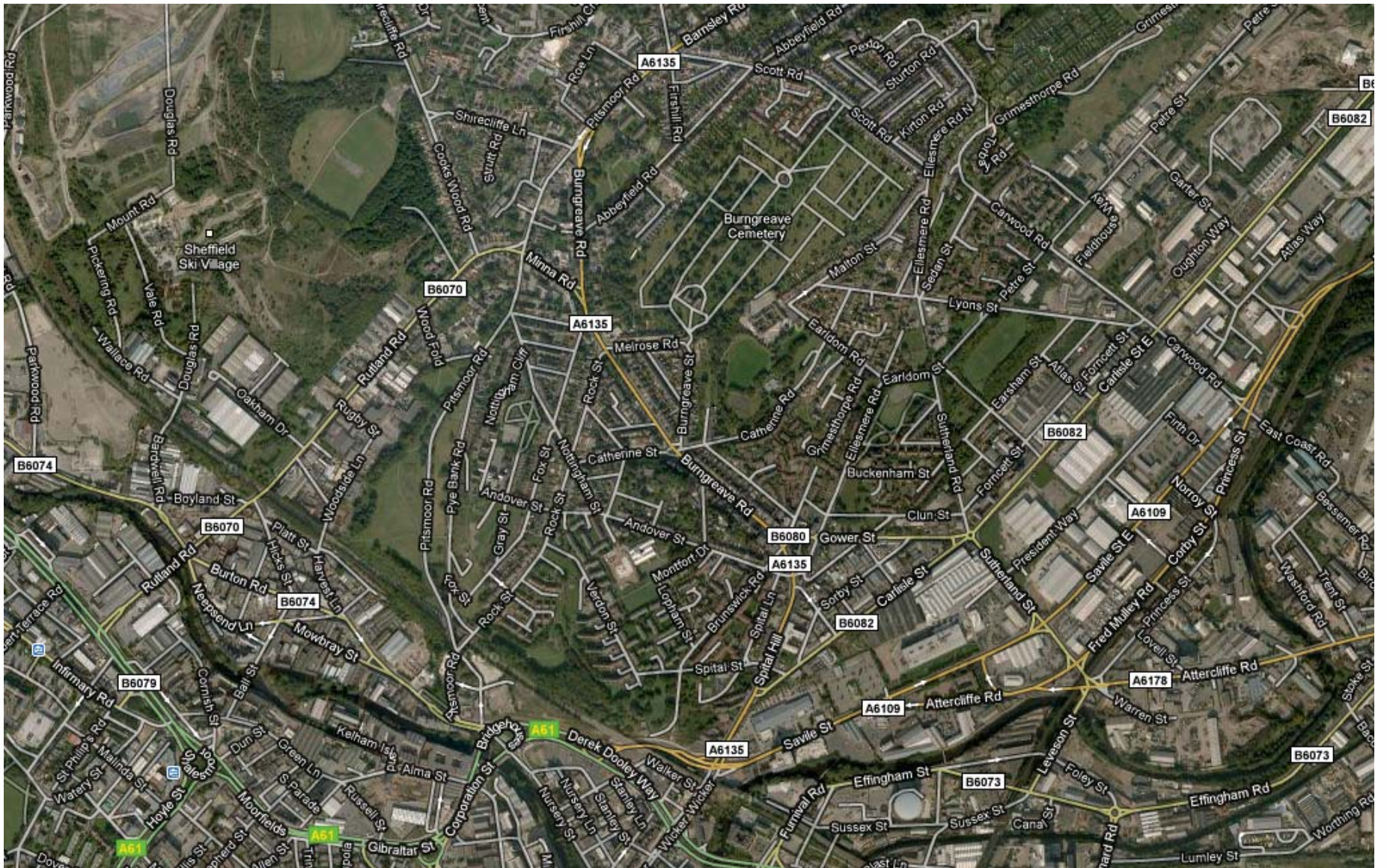


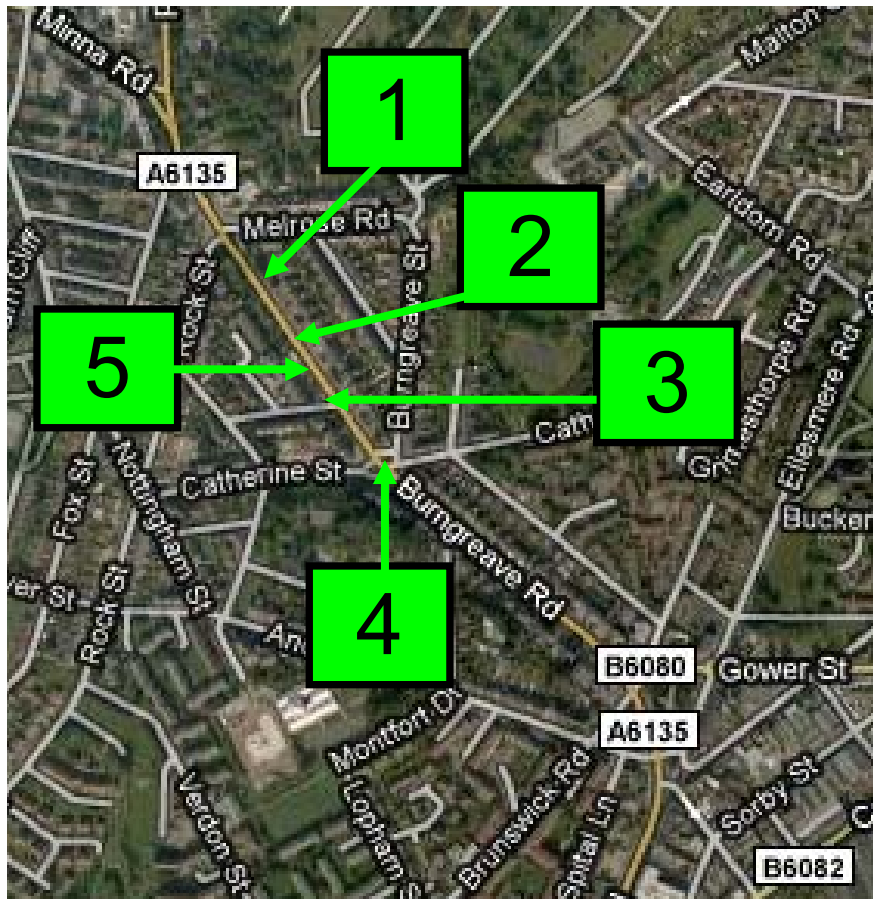
KEY TO MAP

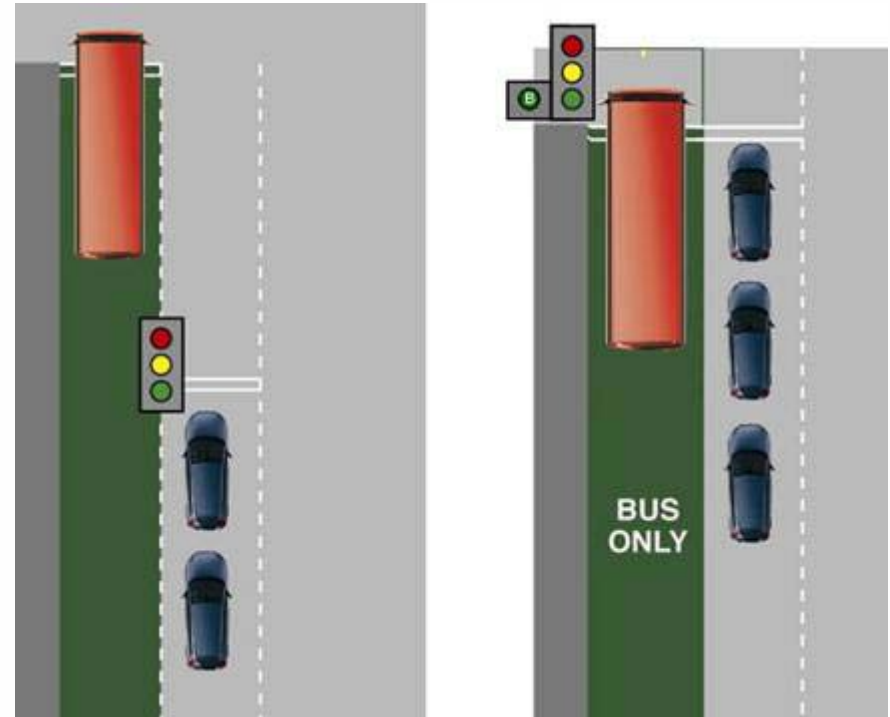
- One-way traffic
- Bus/Cycle/Taxi lane
- Junction where all vehicle manoeuvres permitted
- Buses, Cycles and Taxis only
- Local access routes
- New Inner Relief Road (A61)
- Existing A-roads

Results for Burngreave Melrose Tubes

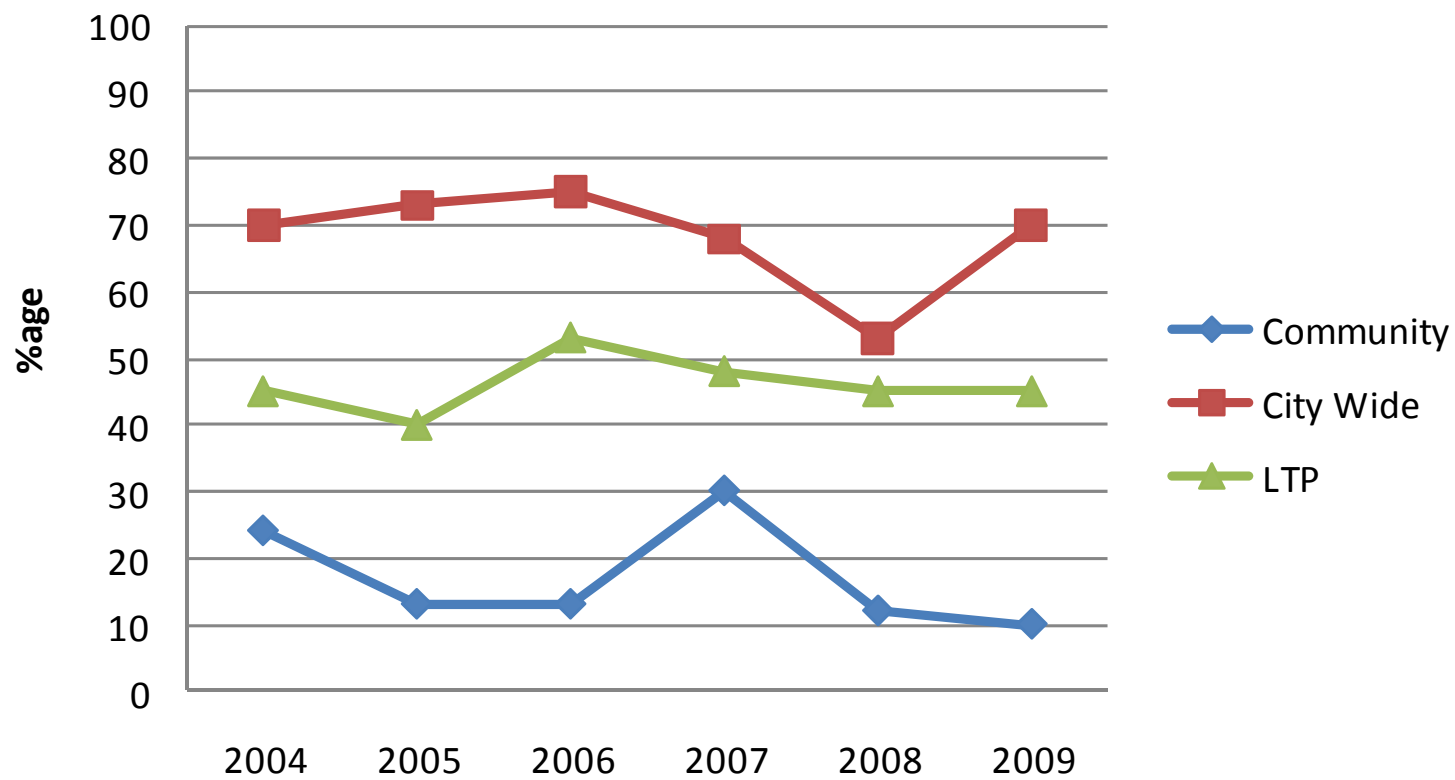
Burngreave/Melrose	Annual Mean NO2 µg/m3 2004	Annual Mean NO2 µg/m3 2005	Annual Mean NO2 µg/m3 2006	Annual Mean NO2 µg/m3 2007	Annual Mean NO2 µg/m3 2008	Annual Mean NO2 µg/m3 2009
120 Burngreave Road	-	-	34	40	29	25
104 Burngreave Road	-	-	35	40	33	25
86 Burngreave Road	-	-	35	41	30	27
Burngreave street junction	-	-	33	33	24	20
73 Burngreave Road	-	-	43	53	40	33





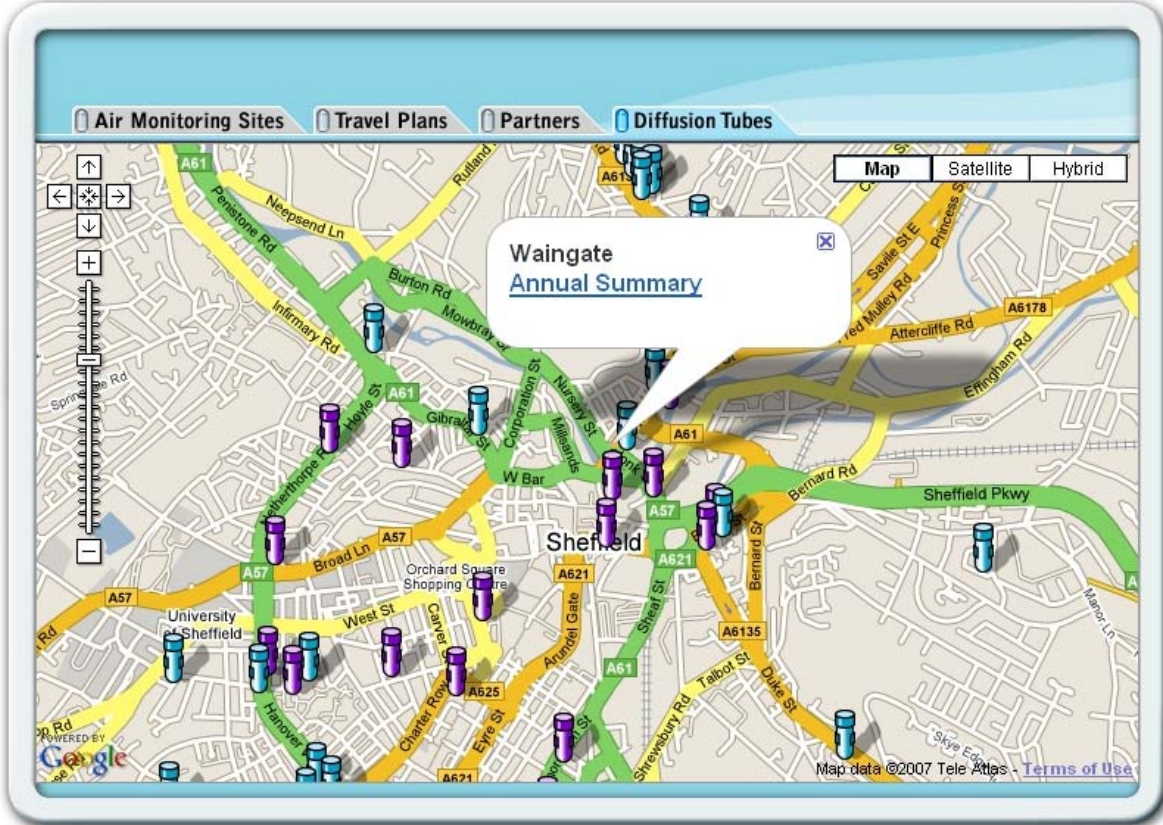


% of tubes above objective



Sheffield Air Map

[Home](#) [View Map](#) [Links](#) [Diffusion Tube Data](#) [Contact Us](#)





Diffusion Tube Results 2008 & 2009



Adam Swift
Environmental Strategy
Support Officer

